

3<sup>e</sup>!T eb! !Be f !

Efdf cf !8 -312 ! 2211!b !

SFMVEF! Nfe b !! WF !F b f !
! PSETPG FMDPNF!BOE!BOOPVODFNFOU!
!
HBUI FSJOHBSPVOE!UI F! PSE!

MJHI UJOHPGUI F!BEWFOU!DBOEMF!
!
JOUS PJU! M !U f!Be f !Db e f!

DBMMUP! PSTI J!
Ml c Rf c ep ac ml ns pJ npb Ht s Af pgr c ug f ns,
B !! B e!b ! ! !
Ml c Jg c rf c Gp c gc u f mnp gcb ns rf c npcn pcb rmc tc Ce nr
B ! M f!K !b e! f!e d f d !df fc bfe! ! f f df!b !
f !f f !b! f!f !fbef ! f f! ! f !ef f d
Ml c c r sp rm ns M Emb g rf c k g r ml gt, c e rf cp pns l b ns p
r c rmpck ck cp ns pk gfr um pi ndmb,
B ! f!b ! ! f !b e! fb !cf f! d !b d b ! ! f! f bdf!
!b f!c ! !cf !U b !cf! ! d P!H e d ! !
f f df! ! d !b e!b b !

I NO! P!M f!U ! !Cf f f ! !

SB FS!PGDPOGFTIJPO!
H e d !b f! f!B b b e!P f b! f!Cf !b e!F e! f! f!
d f ! b! f!e ! ! f!b! f! !cf f f! f!f e!cf ! ! !
f! e! !fb f! !cf f f! ! f! f bc ! ! b d f ! ! dfb!
e b f! b! ! f! f bc ! ! f bdf!b e! ! f!b f! f fe! ! f!
f f f b df! ! d d! b e! e! ! ! ! df d f bdf d b e!
fd d b d cf f ! f!b f! f f ! !d b f!d !G f! !
bb d ! f d b df! !bd d !bd ! ! ! f! f! b! !
e! f! f!T e! ! !T ! b! f! b!cf!f f fe! ! f b f!
! f bdf! ! ! b f!B f !

BTIVSBODF!PGHPE TMPWF!

SFT PO TF! P!D f!M!V !Be f!I !
f ! b f! ! b f! f f d f ! b f! ! b f! f f!
f ! b f! ! b f! f f d D ! f!M e!

BTIJOHPGUI F! FBDF!
rf c nc ac ml Af pgr c ug f ns, B e!b ! ! !

UJNF!GPS! PVOHEJDJ M F T
afgbpcl pc gt gcb rman k c dnu pb dnp rf c Rg c dnp Wns l e Bgagn c ,
dcpu pb afgbpcl ec r f ps 1<sup>st</sup> ep bc k emrm np f gn Ms p ,M, ,
u f gc afgbpcl g r ep bc l b mbcp pc gt gcb rmu np f gn u gf rf cgd k ggc !
! !
PGGFS JOHP VS!MJWF TUP!HPE!
! P f ! ! P ! f!G b f !M f!Cf f !
! ,E ! !
! , b f ! !Efe db ! !

SPDMBJNJOHUI F! PSE!

I FCSF !CJCMF!SFBEOH G gf 31 -# n, 4 1 MR!
! Rfg g rf c npb mlrf c J npb,
! U b !cf! !H e
!
!
!
HP T FMISFBEOH pi 3 +5 n, 13 LR
! Rfg g rf c npb mlrf c J npb,
! U b !cf! !H e

UI F! PSE! SPDMBJNFE! ! ! U !Sf e!

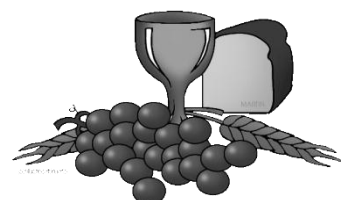
SFT POEJOHUP!UI F! PSE!

UI F!MPSE TTV FS!
! J b ! ! f!M e !Ubc f!
! f b b !I ! M !B !N b!Gf !Lff !Tf df! ! 3
! Hfb!U b ! !U f!M e ! b f! k l mmi n, 4!
Rf c J npb c ug f ns,
B e!b ! ! !
! ! Jg r sn ns pfc pr,
U f !b f! fe! ! ! f!M e!
J cr s eg c rf l i r m f c J npb ns p Emb,
J ! ! ! ! f ! ! b !b e! b f!
! C fb ! ! f!C fbe!
! D ! ! f! f f! D f!U !N !I fb !
! b f !B f !D !

BGGJS NBUJPO!PGGBJUI ! qnk
J !K ! !Ob bf d f! b ! b !fb fe! df! !b !K d d
bf b !K d fe! b ! ! ! f f!b e! bfe! f ! ffe d
f b d d b e! !I f f fe! f! f! !H e! ! e!b e!
effe! b e! c f db f! d c f! !b ! e! ! ! f f !I ! f!b e!
fbd ! e fe! f ! e f d f !b b d b e! b b! f !
! Nb ! f f df! !b e!ef b efe! !efb !J! ! f ! ff ! !
f d f! ! ! f ! f! e f ! ef! d !b! b ! b e!
d d fe!H e! b fe!K ! ! f!efbe! e db ! !b !Nf b !
b e!M e!U f! d ! ! !c f db f! d d b e! ! f! d ! f! !
b e!efb ! !b !

I NO!PGTFOEJOH P!M e-I !T b !J!Nff! @
!
!
CFOFEJDUJPO!BOE!SFT PO TF! M e!M !V !O !Ef b !
!
P TUMVEF! D f!U !M .F fd fe!K !

) R M C M P C @C N J C C R L B



Communion: We welcome all who follow Jesus to
Parents who wish to go get their children from the
Nursery or from W.O.W. to celebrate communion
as a family may do so during the singing of the
Communion preparation hymn.

WORSHIP AND CELEBRATION
Elders: Randa McCall & Danny Wilson

THIS MORNING...
• the liturgist is Katherine Sharp
• the acolytes are Lily Reynolds and Kaylee Arney
• the bell ringer is John Godfrey
• the W.O.W. leaders are Michael & Robin Cozart
• the nursery volunteers are Grace Chi, Karen Peterson and Lila Thurmond
• the sound board tech is John Nowell

VISITORS: We are delighted to have you with us this morning and hope you feel
at home. Please let us know a bit about you by filling in your information in the
Friendship Register. A Nursery is available for infants and children through age
4. If you need directions an usher can assist you.

HEARING DEVICES are available for the hearing impaired from an usher.

WE ARE CURRENTLY IN A YEAR-LONG SERMON SERIES on the Gospel of
Mark
will be to this Good News.

ADVENT WREATH LIGHTERS NEEDED - If your family, Sunday School class,
small group, or group of friends would be interested in lighting the Advent Wreath
one Sunday during Advent, please let Pastor Tim know. He will provide training
and guidance for you.

ABOUT THE BULLETIN COVER ART: The bulletin cover art this year is a new
series of Advent bulletin covers created by regional artist John Stuart, a Scottish
Presbyterian pastor who lives and ministers in East Tennessee. He describes his

recent discovery of his. For more information you can go to www.stushieart.com.

SPENCER-MILLER CONCERT...featuring the McLain Family String Band will
perform next Sunday, December 14<sup>th</sup> at 3:00 p.m. Plan to attend and enjoy
traditional bluegrass and Appalachian folk music performed with guitar, banjo,
mandolin, bass, fiddle and accordion.

THE SOUTHWEST VIRGINIA COMMUNITY COLLEGE JAZZ ENSEMBLE will be
playing Christmas and Jazz standards for dining at Heartwood on Tuesday,
December 9 from 12:00 - 1:30 p.m. Come out and have lunch and hear some
jazz!

SERVICE AND OUTREACH
Elders: Alicia Arney & Kay Bunn

OUR ANNUAL MITTEN TREE located in the Narthex now through the week
following Christmas, your contributions of warm hats, mittens and scarves will be
taken to Faith in Action for distribution to needy families.

OPERATION CHRISTMAS CHILD SHOEBOX a special thanks to all, we collected
87 shoeboxes. A few of us will be heading to Boone, NC on December 16<sup>th</sup> to help

love. To view one of the many ways God is at work in this ministry visit,
http://www.samaritanaspurse.org/article/love-finds-a-way/.

**SERVICE AND OUTREACH**  
**Elders: Alicia Arney & Kay Bunn**

“FIELDS PENN HOUSE MUSEUM CHRISTMAS TREE CONTEST” will be open to the public now through January 6<sup>th</sup>. Take your family and **VOTE** by placing a donation of canned goods under your favorite tree. Donations will go Ecumenical Faith in Action and the Animal Defense League. Please see bulletin board in for

class would appreciate your **VOTE** s bedroom tree located upstairs. The After School Program children handmade the decorations! If you would prefer, donations may be brought to the church and someone will transport to museum, or you may make a monetary contribution by notating on memo line **EFIA Fields Penn** and place in the offering plate. Monies received will be used to help our neighbors in need this CHRISTmas season.

**THE JOY GIFT OFFERING** helps provide financial assistance to current and former church workers and their families and also enables deserving students to attend Presbyterian-related racial ethnic colleges and schools. Rooted in a nearly 300-year old tradition, the Assistance Program embodies the connectional Church at its best. As the Assistance program relies on voluntary gifts, legacies, endowments, and the Joy Gift offering for funding, it provides a way for caring Presbyterians to support those who serve the Church during their times of need. This year Sinking Spring Presbyterian Church will recognize the Joy Gift offering on December 21<sup>st</sup>. Envelopes will be provided in your bulletin. Please give generously.

**SPIRITUAL FORMATION & DISCIPLESIP**  
**Elders: Lucy Phillips & Baird Smith**

**WEDNESDAY NIGHT BIBLE STUDY:** This fall we are studying the Kingdom Parables  
 Pastor Tim leads this study every Wednesday at 6:00 in the Fellowship Hall. You are welcome to join at any time, as each week is a self-contained study. Hope to see you there!

**CHILDREN'S CHRISTMAS MUSICAL AND DRESS REHEARSAL** Children involved with the Christmas program need to be at the church Friday, December 12<sup>th</sup> at 5:00 p.m. for practice; a pizza dinner will be provided at 6:00 p.m. and a full dress rehearsal will follow. Then on Saturday, December 13<sup>th</sup> at 5:00 p.m. *A Light at Christmas* ~

Following the performance there will be a Birthday Party for Jesus in the parlor. Please bring a gift (unwrapped) appropriate for a baby. Gifts will be taken to Faith in Action to be distributed as needed.

**ADVENT DEVOTIONALS:** On the table outside the church parlor are devotional resources for the Advent season. Please feel free to take one so that you and/or your family may grow closer spiritually to God and one another during this season of Advent.

ADVENT & CHRISTMAS WORSHIP OPPORTUNITIES		
Dec. 13 <sup>th</sup>	Children's Christmas Program	5:00 p.m.
Dec. 24 <sup>th</sup>	Communion & Candlelight	5:30 p.m.
Dec. 25 <sup>th</sup>	Christmas Day Informal Worship	10:00 a.m.

**IN THE LIFE OF THE CHURCH**

**TODAY, Sunday, December 7<sup>th</sup> Communion**

10:00 a.m. Sunday School  
 11:00 a.m. Worship in the Sanctuary

**Tuesday, December 9<sup>th</sup>**

8:00 p.m. AA & AI-Anon in the Fellowship Hall

**Wednesday, December 10<sup>th</sup>**

3:15 p.m. After School Program  
 5:00 p.m. Junior Choir  
 6:00 p.m. Bible Study  
 7:30 p.m. Choir

**Thursday, December 11<sup>th</sup>**

7:00 a.m.  
 8:00 p.m. AA in the Fellowship Hall

**Friday, December 12<sup>th</sup>**

5:00 p.m. Christmas Program Rehearsal

**Saturday, December 13<sup>th</sup>**

5:00 p.m.

**Sunday, December 14<sup>th</sup>**

10:00 a.m. Sunday School  
 11:00 a.m. Worship in the Sanctuary

**STEWARDSHIP MINISTRY**  
**Elders: Fred Holt & John Legard**

<b>Stewardship &amp; Attendance</b> for November 30, 2014
Attendance: 163
Offering: \$8,417.00

**THE HUNGER OFFERING WILL BE RECEIVED TODAY**

**CHURCH BULLETINS** are now available on our website! The link to view is <http://www.sinkingspring.org/worship.html#ws>.

**WE ASK FOR PRAYERS FOR OUR HOMEBOUND MEMBERS:** Mazie Cook, Helen Napps, Reed Cooke (Grand Court), June Atkins, Hazel Warden (Abingdon Rehab), Betty Hunter (Abingdon Rehab)

**WE ASK FOR PRAYERS FOR THESE NEW CONCERNS:**

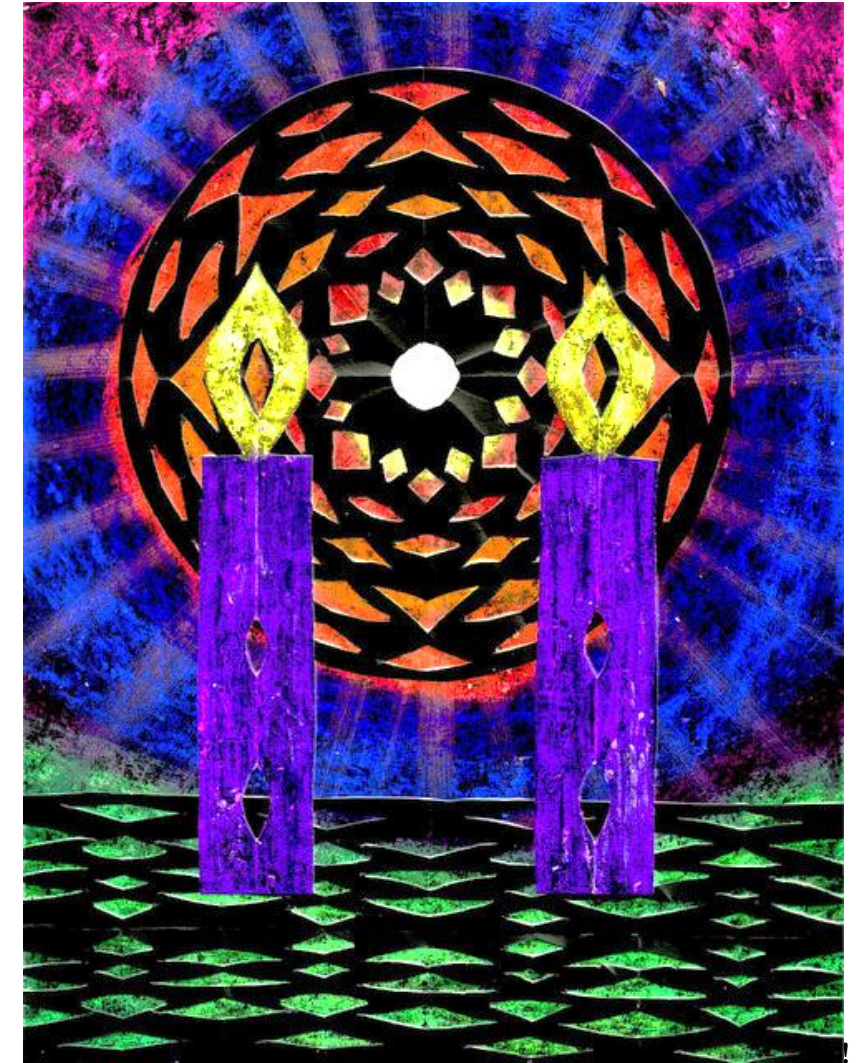
**WE ASK FOR PRAYERS FOR THESE CONTINUED CONCERNS:** David Henninger, Charles Henninger, Jay McCallum, Charlotte Brillhart and Family of Bess Orr.

**AND FOR THESE MEN AND WOMEN IN THE MILITARY:** Joseph McGraw, Nathan McGraw, Mark Widener, Walter Holcomb Jr., John Nowell II, John Nowell III and Dexter Bevis

\*Names remain on the prayer list for 4 weeks unless requested to keep them on longer

!  
 !

**T !T ! f c f b !D d**  
**P b fe!2883!**  
**B!D f b ! ! f! f c f b !D d !)VTB!**  
 !



!  
 !  
**TJOLJOHT S JOH S FIC UFS JBO!DI VS DI !**  
**247!F !Nb !T !, !Bc e !WB!3 32!**  
**D d !P df !!387 73 4472**  
**F b ! dfA**  
**P df!I ! mb rfp Rfspb 7.. ,k, 1.. nk,**  
 !

**N f Nf cf ! !G f e ! ! f!D f b !**  
**b ! Rg Pc lmb n mp gige npe, npe**  
**E fd ! !N d!! paf l bcp e ml gamaf ek gank**  
**E ! !D b !Fe Hl cr aEp u af rgr l cbs a mp gige npe, npe**  
**P df!Be b Bml c mtac gige npe, npe**  
**P b Hc Rpg crc Hncnf ,Rpg crc u, cbs**  
**f d !E fd E n mr**

**Efdf cf !8!312 !**